

PROVIDE Ø20 CAPPED DCW SUPPLY TO POOL COMPLETE WITH REDUCED PRESSURE ZONE BACKFLOW PREVENTION DEVICE INSTALLED ON WALL AT 1.0m AFSL OVER TUNDISH. RPZ TO BE INSTALLED FIXED TO WALL - SHOWN HERE FOR CLARITY.

PROVIDE DEDICATED Ø32 DCW SUPPLY TO EMERGENCY SHOWER AND EYE/FACE WASH IN ACCORDANCE WITH MANUFACTURERS INSTALLATION INSTRUCTIONS COMPLETE WITH LOCKABLE ISOLATION VALVE. PROVIDE LABELING TO ISOLATION VALVES "SERVICES EYEWASH AND SAFETY SHOWER - DO NOT CLOSE."

APT 1.15
REFER TO APARTMENT 1.01 FOR INTERNAL APARTMENT LAYOUT

APT 1.14
REFER TO APARTMENT 1.01 FOR INTERNAL APARTMENT LAYOUT

APT 1.13
REFER TO APARTMENT 1.01 FOR INTERNAL APARTMENT LAYOUT

APT 1.12
REFER TO APARTMENT 1.01 FOR INTERNAL APARTMENT LAYOUT

APT 1.11
REFER TO APARTMENT 1.01 FOR INTERNAL APARTMENT LAYOUT

APT 1.10
REFER TO APARTMENT 1.01 FOR INTERNAL APARTMENT LAYOUT

APT 1.09
REFER TO APARTMENT 1.06 FOR INTERNAL APARTMENT LAYOUT

TENANCY G.03c

TENANCY G.03b

APT 1.08

APT 1.07
REFER TO APARTMENT 1.04 FOR INTERNAL APARTMENT LAYOUT

APT 1.06

APT 1.05
REFER TO APARTMENT 1.04 FOR INTERNAL APARTMENT LAYOUT

APT 1.04

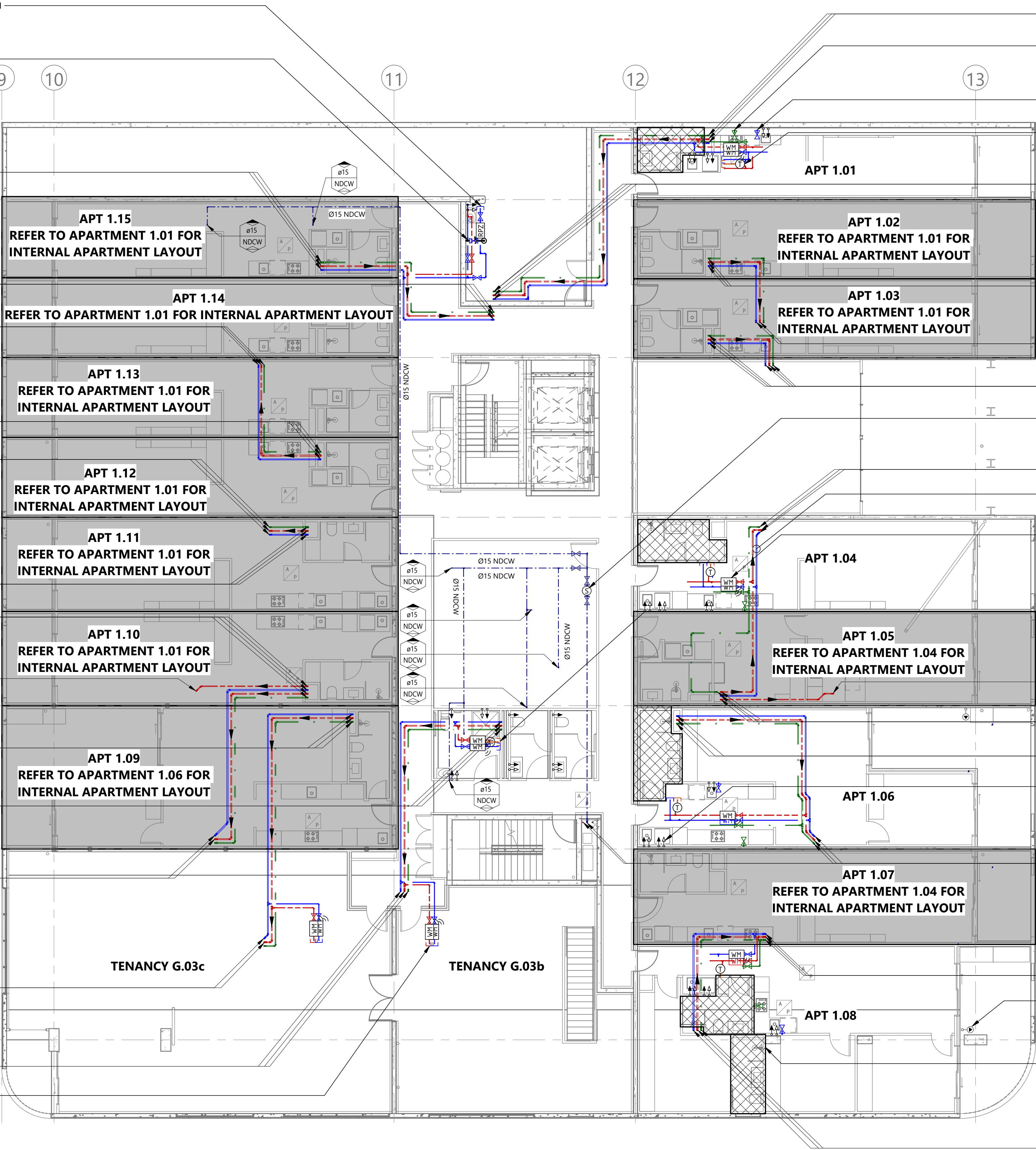
APT 1.03
REFER TO APARTMENT 1.01 FOR INTERNAL APARTMENT LAYOUT

APT 1.02
REFER TO APARTMENT 1.01 FOR INTERNAL APARTMENT LAYOUT

APT 1.01

PROVIDE Ø20 DCW AND Ø20 DHW CAPPED SUPPLIES FOR FUTURE CONNECTION TO COMMERCIAL TENANCY FITOUT COMPLETE WITH ISOLATION VALVES AND PULSE OUTPUT WATER METERS INSTALLED WITHIN CEILING SPACE IN ACCESSIBLE LOCATION (TYPICAL).

NOTE:
PROVIDE PRESSURE REDUCING VALVES TO INCOMING COLD WATER AND HOT WATER SUPPLIES TO APARTMENTS AND BASE BUILDING AREAS AS REQUIRED TO ENSURE MAXIMUM SUPPLY PRESSURE DOES NOT EXCEED 500kPa. REFER TO SCHEMATIC ON [DRAWING NUMBER 1CF14462-H301](#) FOR FURTHER INFORMATION - NOT SHOWN FOR CLARITY.



PROVIDE NATURAL GAS ISOLATION VALVE WITHIN KITCHEN JOINERY IN ACCESSIBLE LOCATION FOR CONNECTION TO KITCHEN COOKTOP IN ACCORDANCE WITH AS/NZS5601 AND MANUFACTURERS INSTALLATION INSTRUCTIONS (TYPICAL).

PROVIDE Ø15 DCW STOPCOCK WITHIN JOINERY FOR CONNECTION TO DISHWASHER (TYPICAL).

PROVIDE TEMPERING VALVE FOR WARM WATER SUPPLY TO APARTMENT BATHROOMS SET AT 50°C MAX WITHIN CEILING SPACE ADJACENT ACCESS PANEL IN ACCESSIBLE LOCATION (TYPICAL).

PROVIDE Ø25 NDCW SUPPLY TO SERVE 2ND FLOOR PLANTERS COMPLETE WITH ISOLATION VALVES AND 300mm STRAIGHT SECTION OF PIPEWORK TO ALLOW FOR FUTURE INSTALLATION OF SOLENOID VALVE.

PROVIDE ACOUSTIC LAGGING TO ALL RETICULATION MAINS PIPEWORK INSTALLED WITHIN APARTMENT CEILING SPACES AND OVER HABITABLE AREAS (TYPICAL).

PROVIDE Ø20 DCW, Ø20 DHW AND Ø25 NG SUPPLIES TO EACH APARTMENT AS SHOWN COMPLETE WITH ISOLATION VALVES AND PULSE OUTPUT WATER METERS ON WATER SUPPLIES - WATER METERS SHALL BE SUPPLIED BY EMBEDDED NETWORK PROVIDER. LOCATE VALVES AND METERS IN CEILING SPACE ADJACENT ACCESS PANEL IN ACCESSIBLE LOCATION (TYPICAL).

PROVIDE Ø20 DCW AND Ø20 DHW SUPPLIES TO AMENITIES COMPLETE WITH ISOLATION VALVES, PULSE OUTPUT WATER METERS AND THERMOSTATIC MIXING VALVE ON WARM WATER SUPPLY SET AT 45°C MAX. LOCATE VALVES AND METERS IN CEILING SPACE ADJACENT ACCESS PANEL.

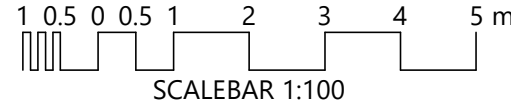
PROVIDE Ø15 DCW AND Ø15 DHW STOPCOCKS BELOW TROUGH FOR CONNECTION TO WASHING MACHINE - SHOWN HERE FOR CLARITY. REFER TO DETAIL ON DRAWING NUMBER [1CF14462-H302](#) FOR FURTHER INFORMATION (TYPICAL).

PROVIDE Ø15 SCREW NOSE BIBCOCK SET AT 750mm AFSL COMPLETE WITH HOSE CONNECTOR SYPHON BREAKER. EXTEND Ø20 DCW SUPPLY FROM APARTMENT COLD WATER SUPPLY DOWNSTREAM OF METER IN ACCORDANCE WITH AS/NZS3500 (TYPICAL).

HATCHED AREA INDICATES POD BATHROOM FOR APARTMENTS. POD TO BE CONSTRUCTED OFF SITE BY BUILDER COMPLETE WITH FIXTURES, TAPWARE AND INTERNAL COLD AND HOT WATER SUPPLIES. CONTRACTOR SHALL LOCATE CAPPED DCW, DHW AND DWW SUPPLIES AT EDGE OF POD AND CONNECT TO APARTMENT SUPPLIES. REFER TO DETAIL ON DRAWING NUMBER [1CF14462-H302](#) FOR FURTHER INFORMATION (TYPICAL).

REV	DESCRIPTION	DATE	CHKD
B	CONSTRUCTION ISSUE	24.03.2020	KR
A	CONSTRUCTION ISSUE	14.02.2020	KR

FOR CONSTRUCTION

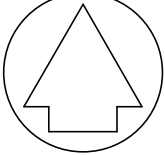


TO BE PRINTED IN COLOUR
THE PURPOSE OF THIS DOCUMENT IS INTENDED TO BE VIEWED OR PRINTED IN COLOUR FOR THE FULL EXTENT OF THE SCOPE OF WORKS TO BE SHOWN.



LUCID
CONSULTING AUSTRALIA
Level 3/169, Pirie St Adelaide SA 5000
Phone: (08) 8407 9700
Email: adelaide@lucidconsulting.com.au

PROJECT
HYDE PARK PLACE
248 UNLEY ROAD, HYDE PARK
HYDRAULIC SERVICES
DRAWING
1ST FLOOR WATER AND GAS RETICULATION
ARRANGEMENT



NOT FOR CONSTRUCTION PURPOSES UNLESS STAMPED FOR CONSTRUCTION. VERIFY DIMENSIONS AND LEVELS ON SITE BEFORE SETTING OUT. DO NOT SCALE. REFER TO FIGURED DIMENSIONS - IN mm UNLESS OTHERWISE STATED.			
Scale	Design: JZ	No. in Set	Date
1 : 100	Drawn: JZ	15 of 25	JAN 2020
Orig. Size	Drawing no.	Revision	
A1	LCE14462-H210	B	